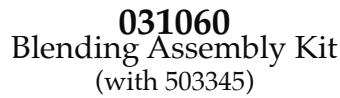
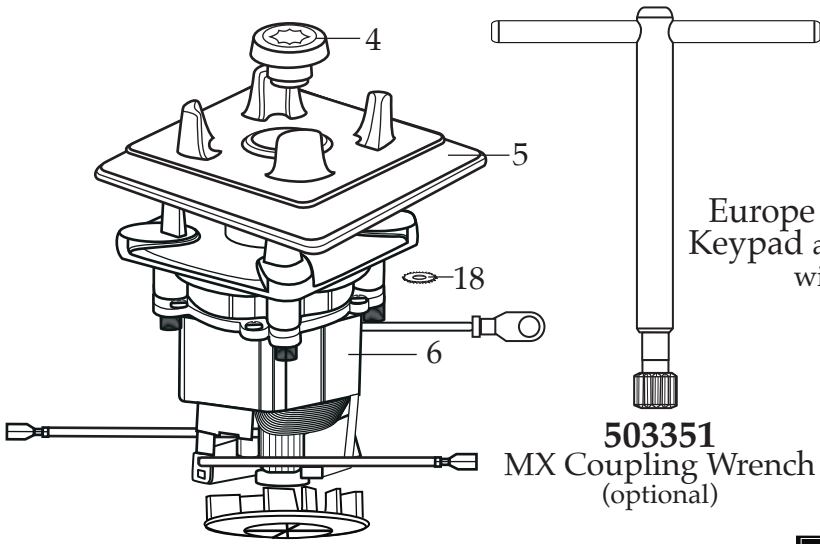




Europe Xtreme Blenders with Electronic Membrane Keypad and a 30 Second Electronic Countdown Timer with a 48 oz. Stackable Raptor Container

**MX1100XTPEE**  
**MX1100XTPSEE**  
 with Sound Enclosure

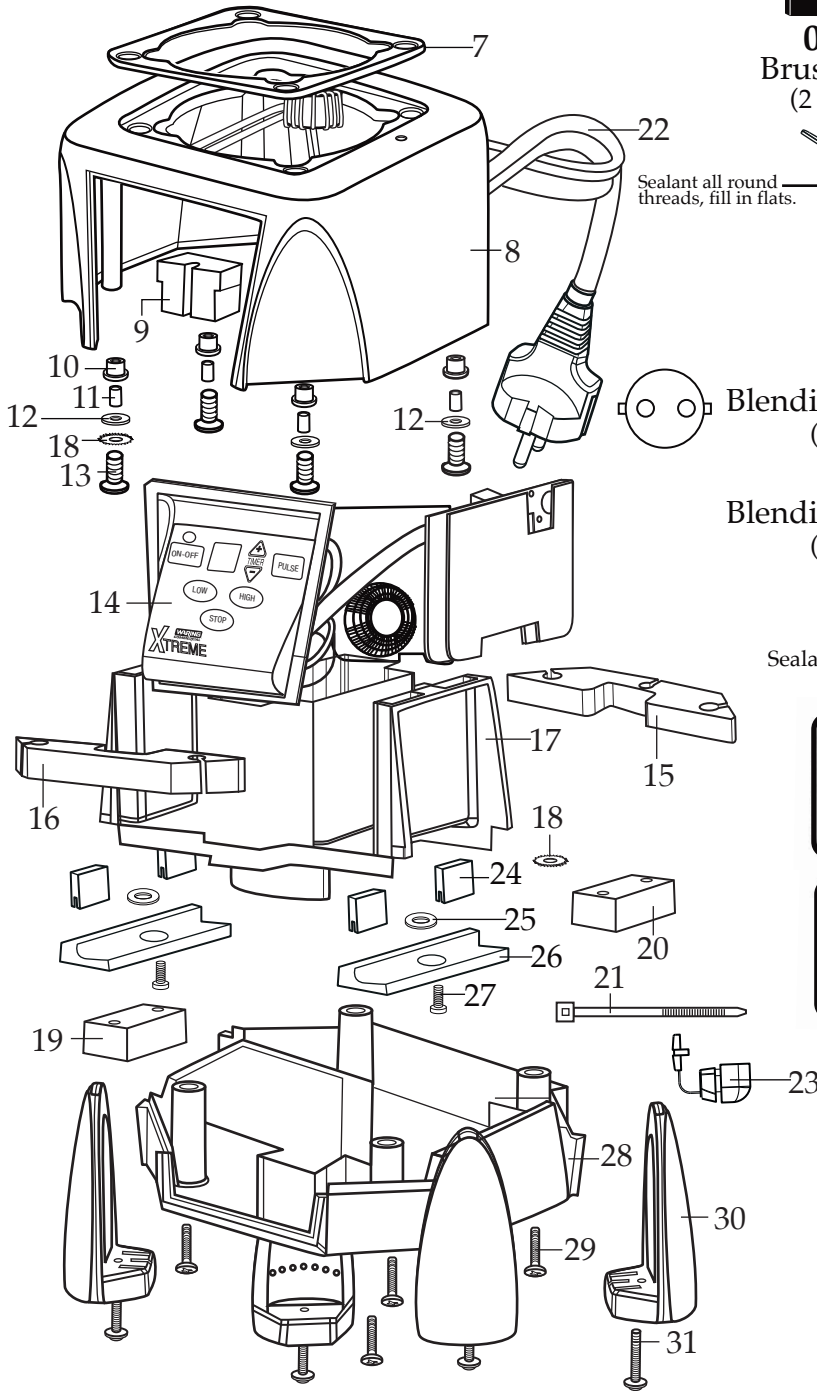
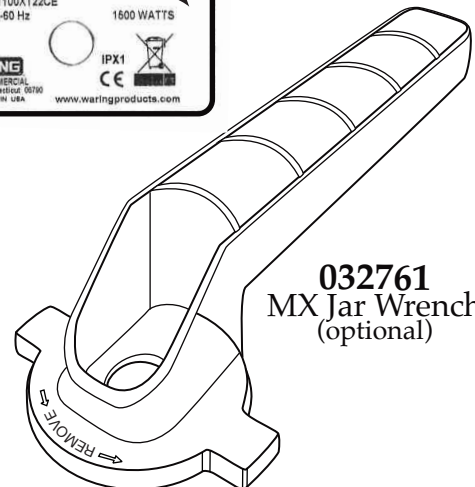
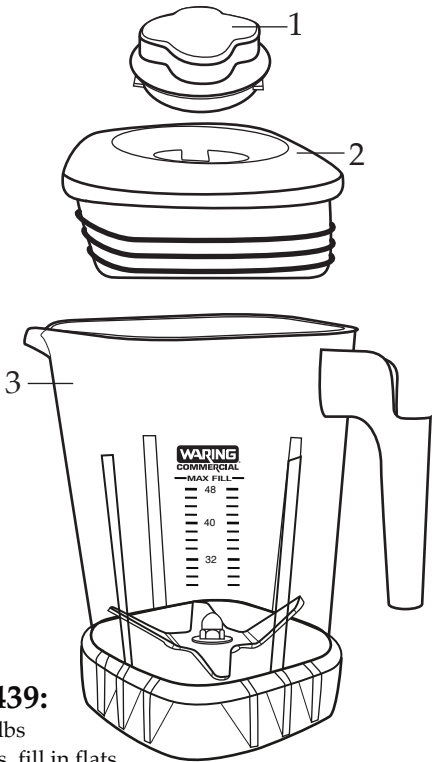


**Notes for 503439:**

Torque 100-125 in/lbs  
 Sealant all around the threads, fill in flats.  
 Dow Corning Sealant RTV 733



Date Code Location  
 YY|MM|DD  
 year year month month day day



**Catalog****Model**

MX1100XTPEE    MX1100XT21CE    MX1100XT21EE  
 MX1100XTPSEE    MX1100XT22SCE    MX1100XT22SEE

(on units after 7/29/2009)



<b>Illustration#</b>	<b>Part#</b>	<b>Description</b>
1	028769-E 028769 026425	Jar Lid Cover ( <i>changed after 8/25/2010</i> ) MX/TBB Eastman Jar Lid Cover (use 028769-E on units after 7/29/2008) MX Eastman Jar Lid Cover (use 026425-E)
2	028768 026424	MX-XT Jar Lid ( <i>on units after 7/29/2008</i> ) MX Vinyl Jar Lid (use 026424-V)
3	030888 503439 503348 503374 503010	48 oz. Stackable Container ONLY ( <i>changed after 8/25/2010</i> ) 48 oz. Stackable Container Assembly ( <i>on units after 3/18/2014</i> ) 48 oz Eastman Container Assembly ( <i>on units after 2/24/2011 use 503349</i> ) 48 oz Jar with Blending Assembly ( <i>on units after 8/25/2010</i> ) (use 503309) - 503309 (use 503348) - 503348 (use 503439)
4	503604 028538	Sq. Drive Coupling with Adapter 2 Gen ( <i>changed after 5-7-2021</i> ) Drive Coupling
5	026442	Jar Pad
6	035398 028823	Leili Motor without Sensor ( <i>on units after 7/21/2017</i> ) ECM Motor without Sensor
7	026437	Dampening Plate Gasket
8	503382-E-67 503382-E	MX Housings, Ferrite Core & Cord ( <i>on units after 7/21/2017</i> ) MX Housings, Ferrite Core & Cord ( <i>on units after 8/22/2012</i> )
9	028541	Motor Foam (2 required)
10	026439	Dampening Plate Bushing (4 required)
11	026453	Dampening Plate Sleeve (4 required)
12	026459	Washer (2 required)
13	028929	Sems (4 required)
14	036399 029815	Control Panel with Interlock ( <i>on units after 6/21/2018</i> ) Soft Start Control Panel ( <i>changed after 8/22/2012 use 036339</i> )
15	028248	Top Housing Foam Rear Baffle
16	028249	Top Housing Foam Front Baffle
17		<i>Motor Housing Included with Illustration # 8</i>
18	002943	Washer (3 required)
19	028247	Bottom Housing Foam Baffle
20	028542	Foam Baffle
21	013731	Cable Tie (3 required <i>on units after 9/22/2008</i> ) – (2 required)
22		<i>Cord Included with Illustration # 8</i>
23	007556 035384 007556	Strain Relief ( <i>changed after 6/21/2018</i> ) Strain Relief ( <i>on units after 4/1/2016</i> ) Strain Relief
24	034900	PCB Cushions (4 required <i>on units after 7/18/2019</i> )
25	037232	Flat Neoprene Washer (2 required <i>on units after 7/18/2019</i> )

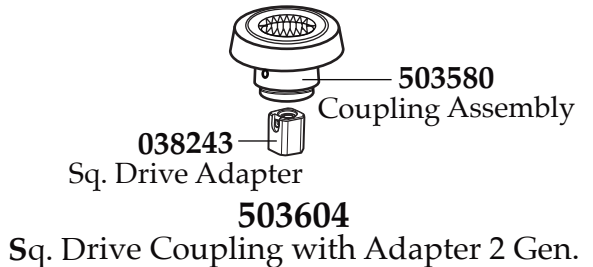
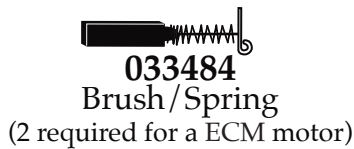
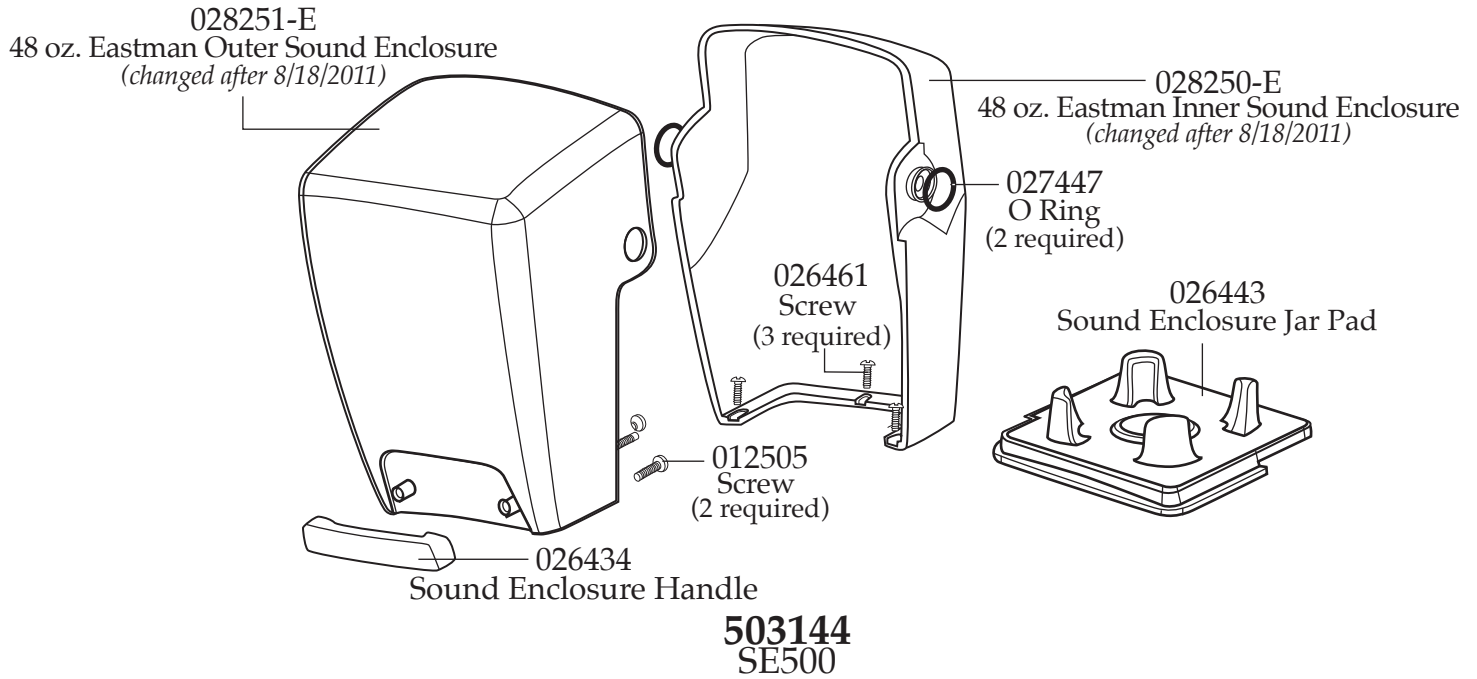
**Catalog**

**Model**

MX1100XTPEE    MX1100XT21CE    MX1100XT21EE  
 MX1100XTPSEE    MX1100XT22SCE    MX1100XT22SEE  
 (on units after 7/29/2009)

**Waring Factory Service Center**  
 314 Ella T. Grasso Ave.  
 Torrington, CT 06790  
 Tele. 1-800-269-6640  
 Fax 860-496-9017  
 www.waringcommercialproducts.com

Illustration#	Part#	Description
26	037007	PCB Mounting Bracket (2 required <i>on units after 7/18/2019</i> )
27	013768	Screw (2 required <i>on units after 7/18/2019</i> )
28		<i>Bottom Housing Included with Illustration # 8</i>
29	012505	Screw (4 required)
30	026430	Corner Post (4 required)
31	028928	Sems (4 required)
32	503397 503345	Blade Assembly ( <i>on units after 3/18/2014</i> ) Blade Assembly
33	024271	O Ring
34	024268	Nut Gasket
35	029631	Bearing Holder Nut



# Catalog

# Model

MX1100XTPEE    MX1100XT21CE    MX1100XT21EE  
 MX1100XTPSEE    MX1100XT22SCE    MX1100XT22SEE  
 (on units after 7/29/2009)

**Waring Factory Service Center**  
 314 Ella T. Grasso Ave.  
 Torrington, CT 06790  
 Tele. 1-800-269-6640

Fax 860-496-9017  
 www.waringcommercialproducts.com

## Parts No Longer Used

(Last used on 8/22/2012)

